



SOLDADOS WELDED



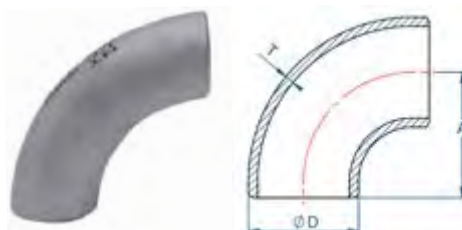
FICHA TÉCNICA
TECHNICAL SHEET




S09014 SCH 10 A-304L

Codo 90° radio largo

Elbow 90° long radius

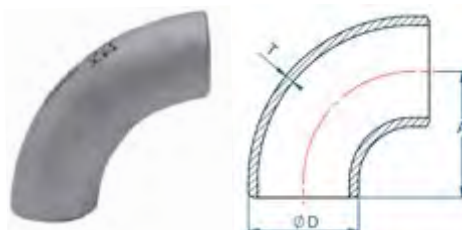



CÓDIGO CODE	MEDIDA SIZE	D	T Sch 10	A		
S09014-015	1/2"	21,34	2,11	38,1	1	consultar
S09014-020	3/4"	26,67	2,11	38,1	1	consultar
S09014-025	1"	33,4	2,77	38,1	1	consultar
S09014-032	1 1/4"	42,16	2,77	47,75	1	consultar
S09014-040	1 1/2"	48,26	2,77	57,15	1	consultar
S09014-050	2"	60,33	2,77	76,2	1	consultar
S09014-065	2 1/2"	73,03	3,05	95,25	1	consultar
S09014-080	3"	88,9	3,05	114,3	1	consultar
S09014-100	4"	114,3	3,05	152,4	1	consultar
S09014-125	5"	141,3	3,4	190,5	1	consultar
S09014-150	6"	168,28	3,4	228,6	1	consultar
S09014-200	8"	219,08	3,76	304,08	1	consultar
S09014-250	10"	273,05	4,19	381	1	consultar
S09014-300	12"	323,85	4,57	457,2	1	consultar

S09016 SCH 10 A-316L

Codo 90° radio largo

Elbow 90° long radius



CÓDIGO CODE	MEDIDA SIZE	D	T Sch 10	A		
S09016-015	1/2"	21,34	2,11	38,1	1	consultar
S09016-020	3/4"	26,67	2,11	38,1	1	consultar
S09016-025	1"	33,4	2,77	38,1	1	consultar
S09016-032	1 1/4"	42,16	2,77	47,75	1	consultar
S09016-040	1 1/2"	48,26	2,77	57,15	1	consultar
S09016-050	2"	60,33	2,77	76,2	1	consultar
S09016-065	2 1/2"	73,03	3,05	95,25	1	consultar
S09016-080	3"	88,9	3,05	114,3	1	consultar
S09016-100	4"	114,3	3,05	152,4	1	consultar
S09016-125	5"	141,3	3,4	190,5	1	consultar
S09016-150	6"	168,28	3,4	228,6	1	consultar
S09016-200	8"	219,08	3,76	304,08	1	consultar
S09016-250	10"	273,05	4,19	381	1	consultar
S09016-300	12"	323,85	4,57	457,2	1	consultar

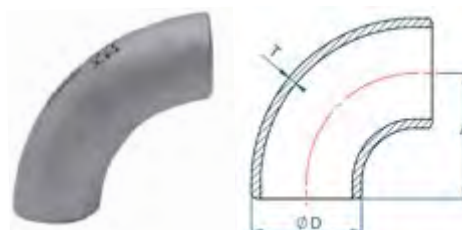
Sch 10


SS09016 SCH 10 A-316L

NEW

Codo 90° radio largo sin
soldadura

Elbow 90° long radius
seamless

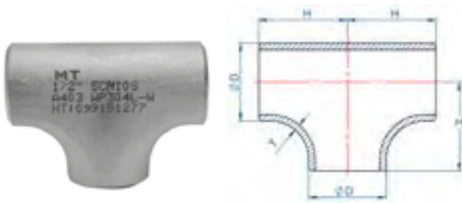


CÓDIGO CODE	MEDIDA SIZE	D1	D2	H	T1	T2		
SS09016-015	1/2"	26,67	21,34	38	2,87	2,77	1	consultar
SS09016-020	3/4"	33,4	21,34	51	3,38	2,77	1	consultar
SS09016-025	1"	33,4	26,67	51	3,38	2,87	1	consultar
SS09016-032	1 1/4"	42,16	26,67	51	3,56	2,87	1	consultar
SS09016-040	1 1/2"	42,16	33,4	51	3,56	3,38	1	consultar
SS09016-050	2"	48,26	26,67	64	3,68	2,87	1	consultar
SS09016-065	2 1/2"	48,26	33,4	64	3,68	3,38	1	consultar
SS09016-080	3"	48,26	42,16	64	3,68	3,56	1	consultar

S13014
SCH 10 A-304L

Te

Tee

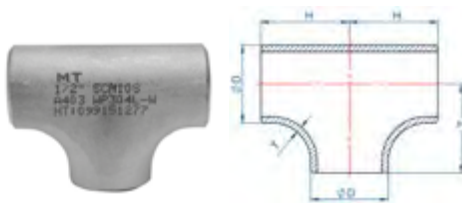


CÓDIGO CODE	MEDIDA SIZE	D	T Sch 10	H	☐	
S13014-015	1/2"	21,34	2,11	25	1	consultar
S13014-020	3/4"	26,67	2,11	29	1	consultar
S13014-025	1"	33,4	2,77	38	1	consultar
S13014-032	1 1/4"	42,16	2,77	48	1	consultar
S13014-040	1 1/2"	48,26	2,77	57	1	consultar
S13014-050	2"	60,33	2,77	64	1	consultar
S13014-065	2 1/2"	73,03	3,05	75	1	consultar
S13014-080	3"	88,9	3,05	86	1	consultar
S13014-100	4"	114,3	3,05	105	1	consultar
S13014-125	5"	141,3	3,4	124	1	consultar
S13014-150	6"	168,28	3,4	143	1	consultar
S13014-200	8"	219,08	3,76	178	1	consultar
S13014-250	10"	273,05	4,19	216	1	consultar
S13014-300	12"	323,85	4,57	254	1	consultar

S13016
SCH 10 A-316L

Te

Tee



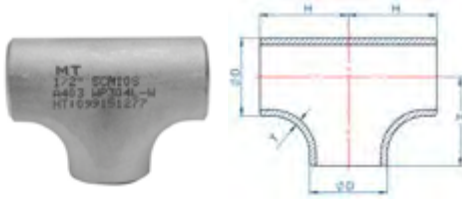
CÓDIGO CODE	MEDIDA SIZE	D	T Sch 10	H	☐	
S13016-015	1/2"	21,34	2,11	25	1	consultar
S13016-020	3/4"	26,67	2,11	29	1	consultar
S13016-025	1"	33,4	2,77	38	1	consultar
S13016-032	1 1/4"	42,16	2,77	48	1	consultar
S13016-040	1 1/2"	48,26	2,77	57	1	consultar
S13016-050	2"	60,33	2,77	64	1	consultar
S13016-065	2 1/2"	73,03	3,05	75	1	consultar
S13016-080	3"	88,9	3,05	86	1	consultar
S13016-100	4"	114,3	3,05	105	1	consultar
S13016-125	5"	141,3	3,4	124	1	consultar
S13016-150	6"	168,28	3,4	143	1	consultar
S13016-200	8"	219,08	3,76	178	1	consultar
S13016-250	10"	273,05	4,19	216	1	consultar
S13016-300	12"	323,85	4,57	254	1	consultar

SS13016
SCH 10 A-316L



Te sin soldadura

Tee seamless



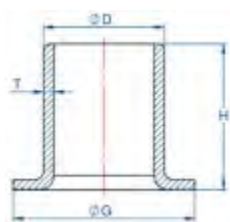
CÓDIGO CODE	MEDIDA SIZE	Sch 10		H	Sch 10		☐	
		D1	D2		T1	T2		
SS13016-015	1/2"	26,67	21,34	38	2,87	2,77	1	consultar
SS13016-020	3/4"	33,4	21,34	51	3,38	2,77	1	consultar
SS13016-025	1"	33,4	26,67	51	3,38	2,87	1	consultar
SS13016-032	1 1/4"	42,16	26,67	51	3,56	2,87	1	consultar
SS13016-040	1 1/2"	42,16	33,4	51	3,56	3,38	1	consultar
SS13016-050	2"	48,26	26,67	64	3,68	2,87	1	consultar
SS13016-065	2 1/2"	48,26	33,4	64	3,68	3,38	1	consultar
SS13016-080	3"	48,26	42,16	64	3,68	3,56	1	consultar

S29614
SCH 10 A-304L

Stub end tipo A



Stub end A type



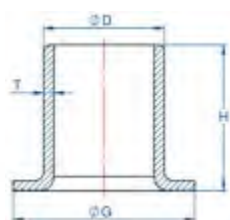
CÓDIGO CODE	MEDIDA SIZE	D	G	T Sch 10	H		
S29614-015	1/2"	21,34	35	2,11	51	1	consultar
S29614-020	3/4"	26,67	43	2,11	51	1	consultar
S29614-025	1"	33,4	50,8	2,77	51	1	consultar
S29614-032	1 1/4"	42,16	63,5	2,77	51	1	consultar
S29614-040	1 1/2"	48,26	73	2,77	51	1	consultar
S29614-050	2"	60,33	92	2,77	63,5	1	consultar
S29614-065	2 1/2"	73,03	105	3,05	63,5	1	consultar
S29614-080	3"	88,9	127	3,05	63,5	1	consultar
S29614-100	4"	114,3	157	3,05	76	1	consultar

S29616
SCH 10 A-316L

Stub end tipo A



Stub end A type



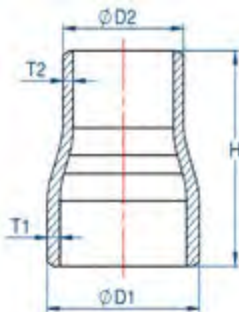
CÓDIGO CODE	MEDIDA SIZE	D	G	T Sch 10	H		
S29616-015	1/2"	21,34	35	2,11	51	1	consultar
S29616-020	3/4"	26,67	43	2,11	51	1	consultar
S29616-025	1"	33,4	50,8	2,77	51	1	consultar
S29616-032	1 1/4"	42,16	63,5	2,77	51	1	consultar
S29616-040	1 1/2"	48,26	73	2,77	51	1	consultar
S29616-050	2"	60,33	92	2,77	63,5	1	consultar
S29616-065	2 1/2"	73,03	105	3,05	63,5	1	consultar
S29616-080	3"	88,9	127	3,05	63,5	1	consultar
S29616-100	4"	114,3	157	3,05	76	1	consultar

S24014
SCH 10 A-304L

Reducción concéntrica



Concentric reducer

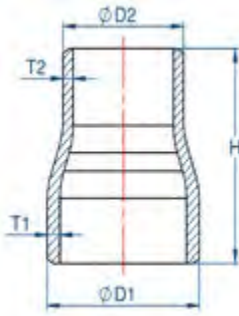


CÓDIGO CODE	MEDIDA SIZE	D1	D2	H	Sch 10			
					T1	T2		
S24014-020015	3/4" x 1/2"	26,67	21,34	38	2,11	2,11	1	consultar
S24014-025015	1" x 1/2"	33,4	21,34	51	2,77	2,11	1	consultar
S24014-025020	1" x 3/4"	33,4	26,67	51	2,77	2,11	1	consultar
S24014-032020	1 1/4" x 3/4"	42,16	26,67	51	2,77	2,11	1	consultar
S24014-032025	1 1/4" x 1"	42,16	33,4	51	2,77	2,77	1	consultar
S24014-040020	1 1/2" x 3/4"	48,26	26,67	64	2,77	2,11	1	consultar
S24014-040025	1 1/2" x 1"	48,26	33,4	64	2,77	2,77	1	consultar
S24014-040032	1 1/2" x 1 1/4"	48,26	42,16	64	2,77	2,77	1	consultar
S24014-050020	2" x 3/4"	60,32	26,67	76	2,77	2,11	1	consultar
S24014-050025	2" x 1"	60,32	33,4	76	2,77	2,77	1	consultar
S24014-050032	2" x 1 1/4"	60,32	42,16	76	2,77	2,77	1	consultar
S24014-050040	2" x 1 1/2"	60,32	48,26	76	2,77	2,77	1	consultar
S24014-065025	2 1/2" x 1"	73,02	33,4	89	3,05	2,77	1	consultar
S24014-065032	2 1/2" x 1 1/4"	73,02	42,16	89	3,05	2,77	1	consultar
S24014-065040	2 1/2" x 1 1/2"	73,02	48,26	89	3,05	2,77	1	consultar
S24014-065050	2 1/2" x 2"	73,02	60,32	89	3,05	2,77	1	consultar
S24014-080040	3" x 1 1/2"	88,9	48,26	89	3,05	2,77	1	consultar
S24014-080050	3" x 2"	88,9	60,32	89	3,05	2,77	1	consultar
S24014-080065	3" x 2 1/2"	88,9	73,02	89	3,05	3,05	1	consultar
S24014-100050	4" x 2"	114,3	60,32	102	3,05	2,77	1	consultar
S24014-100065	4" x 2 1/2"	114,3	73,02	102	3,05	3,05	1	consultar
S24014-100080	4" x 3"	114,3	88,9	102	3,05	3,05	1	consultar
S24014-125080	5" x 3"	141,3	88,9	127	3,4	3,05	1	consultar
S24014-125100	5" x 4"	141,3	114,3	127	3,4	3,05	1	consultar
S24014-150100	6" x 4"	168,27	114,3	140	3,4	3,05	1	consultar
S24014-150125	6" x 5"	168,27	141,3	140	3,4	3,4	1	consultar
S24014-200100	8" x 4"	219,08	114,3	152	3,76	3,05	1	consultar
S24014-200125	8" x 5"	219,08	141,3	152	3,76	3,4	1	consultar
S24014-200150	8" x 6"	219,08	168,27	152	3,76	3,4	1	consultar
S24014-250200	10" x 8"	273,05	219,08	178	4,19	3,76	1	consultar
S24014-300250	12" x 10"	323,85	273,05	203	4,57	4,19	1	consultar

S24016
SCH 10 A-316L

Reducción concéntrica

Concentric reducer

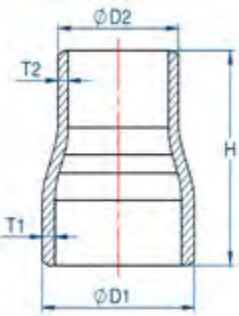


CÓDIGO CODE	MEDIDA SIZE	D1	D2	H	Sch 10		Icon	Action
					T1	T2		
S24016-020015	3/4" x 1/2"	26,67	21,34	38	2,11	2,11	1	consultar
S24016-025015	1" x 1/2"	33,4	21,34	51	2,77	2,11	1	consultar
S24016-025020	1" x 3/4"	33,4	26,67	51	2,77	2,11	1	consultar
S24016-032020	1 1/4" x 3/4"	42,16	26,67	51	2,77	2,11	1	consultar
S24016-032025	1 1/4" x 1"	42,16	33,4	51	2,77	2,77	1	consultar
S24016-040020	1 1/2" x 3/4"	48,26	26,67	64	2,77	2,11	1	consultar
S24016-040025	1 1/2" x 1"	48,26	33,4	64	2,77	2,77	1	consultar
S24016-040032	1 1/2" x 1 1/4"	48,26	42,16	64	2,77	2,77	1	consultar
S24016-050020	2" x 3/4"	60,32	26,67	76	2,77	2,11	1	consultar
S24016-050025	2" x 1"	60,32	33,4	76	2,77	2,77	1	consultar
S24016-050032	2" x 1 1/4"	60,32	42,16	76	2,77	2,77	1	consultar
S24016-050040	2" x 1 1/2"	60,32	48,26	76	2,77	2,77	1	consultar
S24016-065025	2 1/2" x 1"	73,02	33,4	89	3,05	2,77	1	consultar
S24016-065032	2 1/2" x 1 1/4"	73,02	42,16	89	3,05	2,77	1	consultar
S24016-065040	2 1/2" x 1 1/2"	73,02	48,26	89	3,05	2,77	1	consultar
S24016-065050	2 1/2" x 2"	73,02	60,32	89	3,05	2,77	1	consultar
S24016-080040	3" x 1 1/2"	88,9	48,26	89	3,05	2,77	1	consultar
S24016-080050	3" x 2"	88,9	60,32	89	3,05	2,77	1	consultar
S24016-080065	3" x 2 1/2"	88,9	73,02	89	3,05	3,05	1	consultar
S24016-100050	4" x 2"	114,3	60,32	102	3,05	2,77	1	consultar
S24016-100065	4" x 2 1/2"	114,3	73,02	102	3,05	3,05	1	consultar
S24016-100080	4" x 3"	114,3	88,9	102	3,05	3,05	1	consultar
S24016-125080	5" x 3"	141,3	88,9	127	3,4	3,05	1	consultar
S24016-125100	5" x 4"	141,3	114,3	127	3,4	3,05	1	consultar
S24016-150100	6" x 4"	168,27	114,3	140	3,4	3,05	1	consultar
S24016-150125	6" x 5"	168,27	141,3	140	3,4	3,4	1	consultar
S24016-200100	8" x 4"	219,08	114,3	152	3,76	3,05	1	consultar
S24016-200125	8" x 5"	219,08	141,3	152	3,76	3,4	1	consultar
S24016-200150	8" x 6"	219,08	168,27	152	3,76	3,4	1	consultar
S24016-250200	10" x 8"	273,05	219,08	178	4,19	3,76	1	consultar
S24016-300250	12" x 10"	323,85	273,05	203	4,57	4,19	1	consultar

SS24016
SCH 10 A-316L NEW

Reducción concéntrica
sin soldadura

Concentric reducer
seamless



CÓDIGO CODE	MEDIDA SIZE	D1	D2	H	Sch 10		Icon	Action
					T1	T2		
SS24016-025015	1" x 1/2"	26,67	21,34	38	2,87	2,77	1	consultar
SS24016-025020	1" x 3/4"	33,4	21,34	51	3,38	2,77	1	consultar
SS24016-032020	1 1/4" x 3/4"	33,4	26,67	51	3,38	2,87	1	consultar
SS24016-032025	1 1/4" x 1"	42,16	26,67	51	3,56	2,87	1	consultar
SS24016-040020	1 1/2" x 3/4"	42,16	33,4	51	3,56	3,38	1	consultar
SS24016-040025	1 1/2" x 1"	48,26	26,67	64	3,68	2,87	1	consultar
SS24016-040032	1 1/2" x 1 1/4"	48,26	33,4	64	3,68	3,38	1	consultar
SS24016-050025	2" x 1"	48,26	42,16	64	3,68	3,56	1	consultar
SS24016-050032	2" x 1 1/4"	48,26	42,16	64	3,68	3,56	1	consultar
SS24016-050040	2" x 1 1/2"	48,26	42,16	64	3,68	3,56	1	consultar
SS24016-065050	2 1/2" x 2"	48,26	42,16	64	3,68	3,56	1	consultar
SS24016-080040	3" x 1 1/2"	48,26	42,16	64	3,68	3,56	1	consultar
SS24016-080050	3" x 2"	48,26	42,16	64	3,68	3,56	1	consultar
SS24016-080065	3" x 2 1/2"	48,26	42,16	64	3,68	3,56	1	consultar

S29014

SCH 10 A-304L

Tapón

Cap



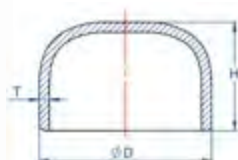
CÓDIGO CODE	MEDIDA SIZE	D	T Sch 10	H	☐	
S29014-015	1/2"	21,34	2,11	25	1	consultar
S29014-020	3/4"	26,67	2,11	25	1	consultar
S29014-025	1"	33,4	2,77	38	1	consultar
S29014-032	1 1/4"	42,16	2,77	38	1	consultar
S29014-040	1 1/2"	48,26	2,77	38	1	consultar
S29014-050	2"	60,33	2,77	38	1	consultar
S29014-065	2 1/2"	73,03	3,05	38	1	consultar
S29014-080	3"	88,9	3,05	51	1	consultar
S29014-100	4"	114,3	3,05	64	1	consultar
S29014-125	5"	141,3	3,4	76	1	consultar
S29014-150	6"	168,28	3,4	89	1	consultar
S29014-200	8"	219,08	3,76	102	1	consultar
S29014-250	10"	273,05	4,19	127	1	consultar
S29014-300	12"	323,85	4,57	152	1	consultar

S29016

SCH 10 A-316L

Tapón

Cap



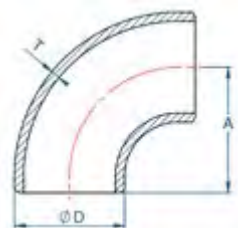
CÓDIGO CODE	MEDIDA SIZE	D	T Sch 10	H	☐	
S29016-015	1/2"	21,34	2,11	25	1	consultar
S29016-020	3/4"	26,67	2,11	25	1	consultar
S29016-025	1"	33,4	2,77	38	1	consultar
S29016-032	1 1/4"	42,16	2,77	38	1	consultar
S29016-040	1 1/2"	48,26	2,77	38	1	consultar
S29016-050	2"	60,33	2,77	38	1	consultar
S29016-065	2 1/2"	73,03	3,05	38	1	consultar
S29016-080	3"	88,9	3,05	51	1	consultar
S29016-100	4"	114,3	3,05	64	1	consultar
S29016-125	5"	141,3	3,4	76	1	consultar
S29016-150	6"	168,28	3,4	89	1	consultar
S29016-200	8"	219,08	3,76	102	1	consultar
S29016-250	10"	273,05	4,19	127	1	consultar
S29016-300	12"	323,85	4,57	152	1	consultar

S09046

SCH 40 A-316L

Codo 90° radio largo

Elbow 90° long radius



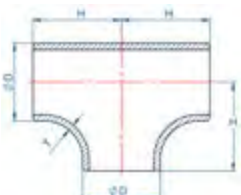
CÓDIGO CODE	MEDIDA SIZE	D	T Sch 40	A	☐	
S09046-015	1/2"	21,34	2,77	38,1	1	consultar
S09046-020	3/4"	26,67	2,87	38,1	1	consultar
S09046-025	1"	33,4	3,38	38,1	1	consultar
S09046-032	1 1/4"	42,16	3,56	47,75	1	consultar
S09046-040	1 1/2"	48,26	3,68	57,15	1	consultar
S09046-050	2"	60,33	3,91	76,2	1	consultar
S09046-065	2 1/2"	73,03	5,16	95,25	1	consultar
S09046-080	3"	88,9	5,49	114,3	1	consultar
S09046-100	4"	114,3	6,02	152,4	1	consultar
S09046-125	5"	141,3	6,55	190,5	1	consultar
S09046-150	6"	168,28	7,11	228,6	1	consultar
S09046-200	8"	219,08	8,18	304,08	1	consultar
S09046-250	10"	273,05	9,27	381	1	consultar

S13046

SCH 40 A-316L

Te

Tee



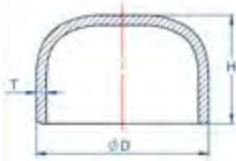
CÓDIGO CODE	MEDIDA SIZE	D	T Sch 40	H	☐	
S13046-015	1/2"	21,34	2,77	25	1	consultar
S13046-020	3/4"	26,67	2,87	29	1	consultar
S13046-025	1"	33,4	3,38	38	1	consultar
S13046-032	1 1/4"	42,16	3,56	48	1	consultar
S13046-040	1 1/2"	48,26	3,68	57	1	consultar
S13046-050	2"	60,33	3,91	64	1	consultar
S13046-065	2 1/2"	73,03	5,16	75	1	consultar
S13046-080	3"	88,9	5,49	86	1	consultar
S13046-100	4"	114,3	6,02	105	1	consultar
S13046-125	5"	141,3	6,55	124	1	consultar
S13046-150	6"	168,28	7,11	143	1	consultar
S13046-200	8"	219,08	8,18	178	1	consultar
S13046-250	10"	273,05	9,27	216	1	consultar

S29046

SCH 40 A-316L

Tapón

Cap



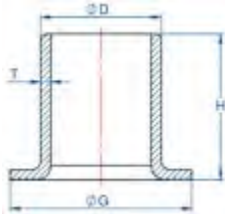
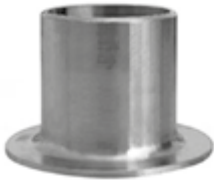
CÓDIGO CODE	MEDIDA SIZE	D	T Sch 40	H	☐	
S29046-015	1/2"	21,34	2,77	25	1	consultar
S29046-020	3/4"	26,67	2,87	25	1	consultar
S29046-025	1"	33,4	3,38	38	1	consultar
S29046-032	1 1/4"	42,16	3,56	38	1	consultar
S29046-040	1 1/2"	48,26	3,68	38	1	consultar
S29046-050	2"	60,33	3,91	38	1	consultar
S29046-065	2 1/2"	73,03	5,16	38	1	consultar
S29046-080	3"	88,9	5,49	51	1	consultar
S29046-100	4"	114,3	6,02	64	1	consultar
S29046-125	5"	141,3	6,55	76	1	consultar
S29046-150	6"	168,28	7,11	89	1	consultar
S29046-200	8"	219,08	8,18	102	1	consultar
S29046-250	10"	273,05	9,27	127	1	consultar

S29646

SCH 40 A-316L

Stub end tipo A

Stub end A type



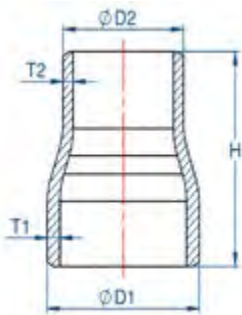
CÓDIGO CODE	MEDIDA SIZE	D	G	H	T Sch 40	☐	
S29646-015	1/2"	21,34	35	51	2,77	1	consultar
S29646-020	3/4"	26,67	43	51	2,87	1	consultar
S29646-025	1"	33,4	50,8	51	3,38	1	consultar
S29646-032	1 1/4"	42,16	63,5	51	3,56	1	consultar
S29646-040	1 1/2"	48,26	73	51	3,68	1	consultar
S29646-050	2"	60,33	92	63,5	3,91	1	consultar
S29646-065	2 1/2"	73,03	105	63,5	5,16	1	consultar
S29646-080	3"	88,9	127	63,5	5,49	1	consultar
S29646-100	4"	114,3	157	76	6,02	1	consultar

S24046

SCH 40 A-316L

Reducción concéntrica

Concentric reducer



CÓDIGO CODE	MEDIDA SIZE	D1	D2	H	Sch 40		☐	
					T1	T2		
S24046-020015	3/4" x 1/2"	26,67	21,34	38	2,87	2,77	1	consultar
S24046-025015	1" x 1/2"	33,4	21,34	51	3,38	2,77	1	consultar
S24046-025020	1" x 3/4"	33,4	26,67	51	3,38	2,87	1	consultar
S24046-032020	1 1/4" x 3/4"	42,16	26,67	51	3,56	2,87	1	consultar
S24046-032025	1 1/4" x 1"	42,16	33,4	51	3,56	3,38	1	consultar
S24046-040020	1 1/2" x 3/4"	48,26	26,67	64	3,68	2,87	1	consultar
S24046-040025	1 1/2" x 1"	48,26	33,4	64	3,68	3,38	1	consultar
S24046-040032	1 1/2" x 1 1/4"	48,26	42,16	64	3,68	3,56	1	consultar
S24046-050020	2" x 3/4"	60,32	26,67	76	3,91	2,87	1	consultar
S24046-050025	2" x 1"	60,32	33,4	76	3,91	3,38	1	consultar
S24046-050032	2" x 1 1/4"	60,32	42,16	76	3,91	3,56	1	consultar
S24046-050040	2" x 1 1/2"	60,32	48,26	76	3,91	3,68	1	consultar
S24046-065025	2 1/2" x 1"	73,02	33,4	89	5,16	3,38	1	consultar
S24046-065032	2 1/2" x 1 1/4"	73,02	42,16	89	5,16	3,56	1	consultar
S24046-065040	2 1/2" x 1 1/2"	73,02	48,26	89	5,16	3,68	1	consultar
S24046-065050	2 1/2" x 2"	73,02	60,32	89	5,16	3,91	1	consultar
S24046-080040	3" x 1 1/2"	88,9	48,26	89	5,49	3,68	1	consultar
S24046-080050	3" x 2"	88,9	60,32	89	5,49	3,91	1	consultar
S24046-080065	3" x 2 1/2"	88,9	73,02	89	5,49	5,16	1	consultar
S24046-100050	4" x 2"	114,3	60,32	102	6,02	3,91	1	consultar
S24046-100065	4" x 2 1/2"	114,3	73,02	102	6,02	5,16	1	consultar
S24046-100080	4" x 3"	114,3	88,9	102	6,02	5,49	1	consultar
S24046-125080	5" x 3"	141,3	88,9	127	6,55	5,49	1	consultar
S24046-125100	5" x 4"	141,3	114,3	127	6,55	6,02	1	consultar
S24046-150100	6" x 4"	168,27	114,3	140	7,11	6,02	1	consultar
S24046-150125	6" x 5"	168,27	141,3	140	7,11	6,55	1	consultar
S24046-200100	8" x 4"	219,08	114,3	152	8,18	6,02	1	consultar
S24046-200125	8" x 5"	219,08	141,3	152	8,18	6,55	1	consultar
S24046-200150	8" x 6"	219,08	168,27	152	8,18	7,11	1	consultar
S24046-250200	10" x 8"	273,05	219,08	178	9,27	8,18	1	consultar